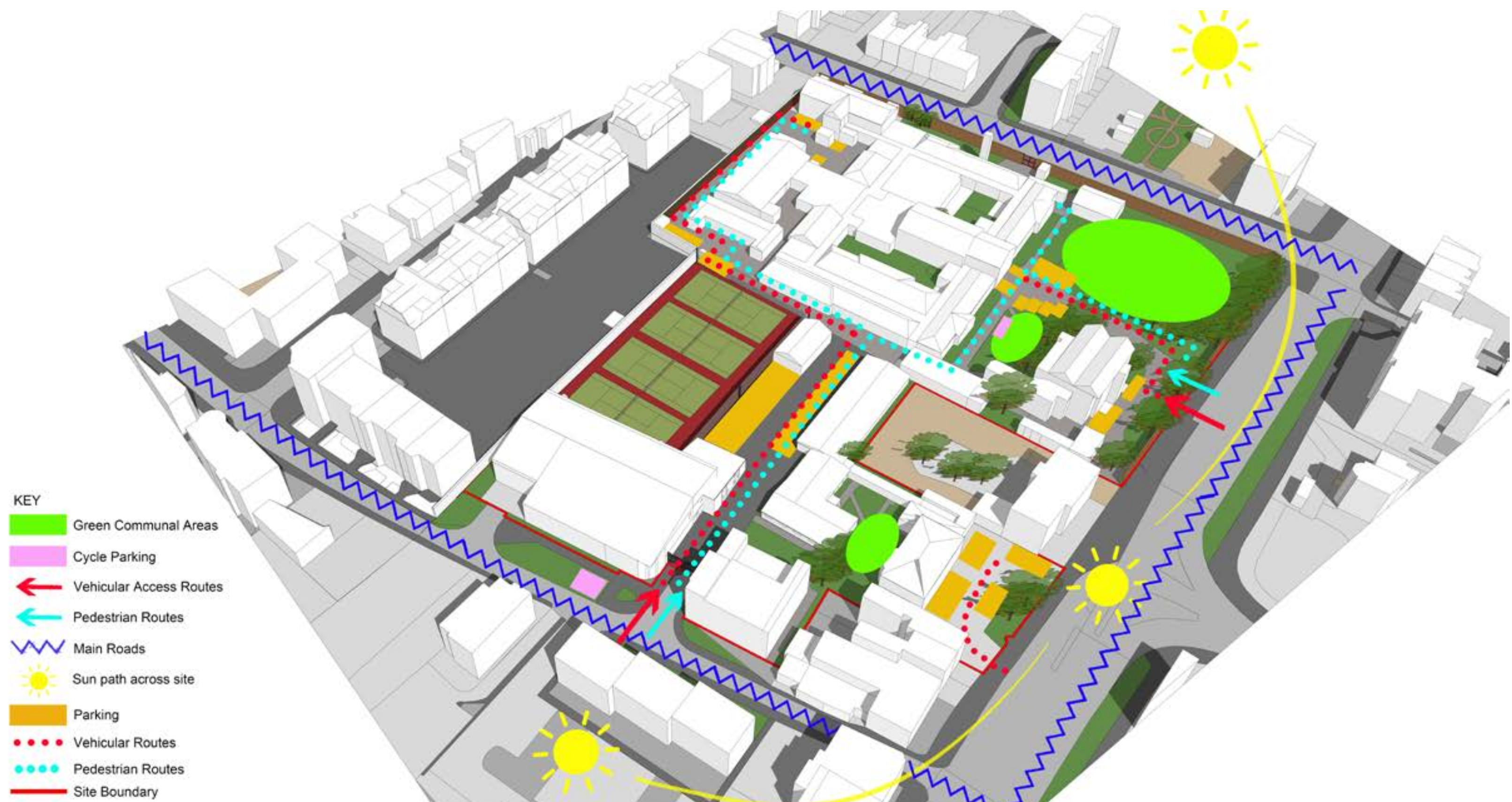


Introduction

The Selective Schools Expansion Fund (SSEF) is up to £50m. This is the capital funding for 2018 to 2019, to support the creation of additional high quality places in fully selective or partially selective schools. The case for expansion must set out the rationale for the proposed expansion, including how schools will meet the demand for places locally and bring about educational benefits. The purpose of the SSEF is to support the expansion of selective schools where:

- There is a need for additional places, both in terms of a shortfall of secondary places in the local area and a demand from parents for more selective places;
- Schools have ambitious and realistic plans for increasing access for disadvantaged pupils (this includes pupils eligible for the pupil premium)
- They have plans to work with other local schools to increase access for disadvantaged pupils and to raise attainment.

Site Analysis



Site Photos



Baily Garner Introduction:

Baily Garner has been combining excellence and innovation for more than 40 years. Based in London and Birmingham, we have a strong track record across the housing, health, education, care, blue light and commercial sectors, as well as in regeneration and mixed use.

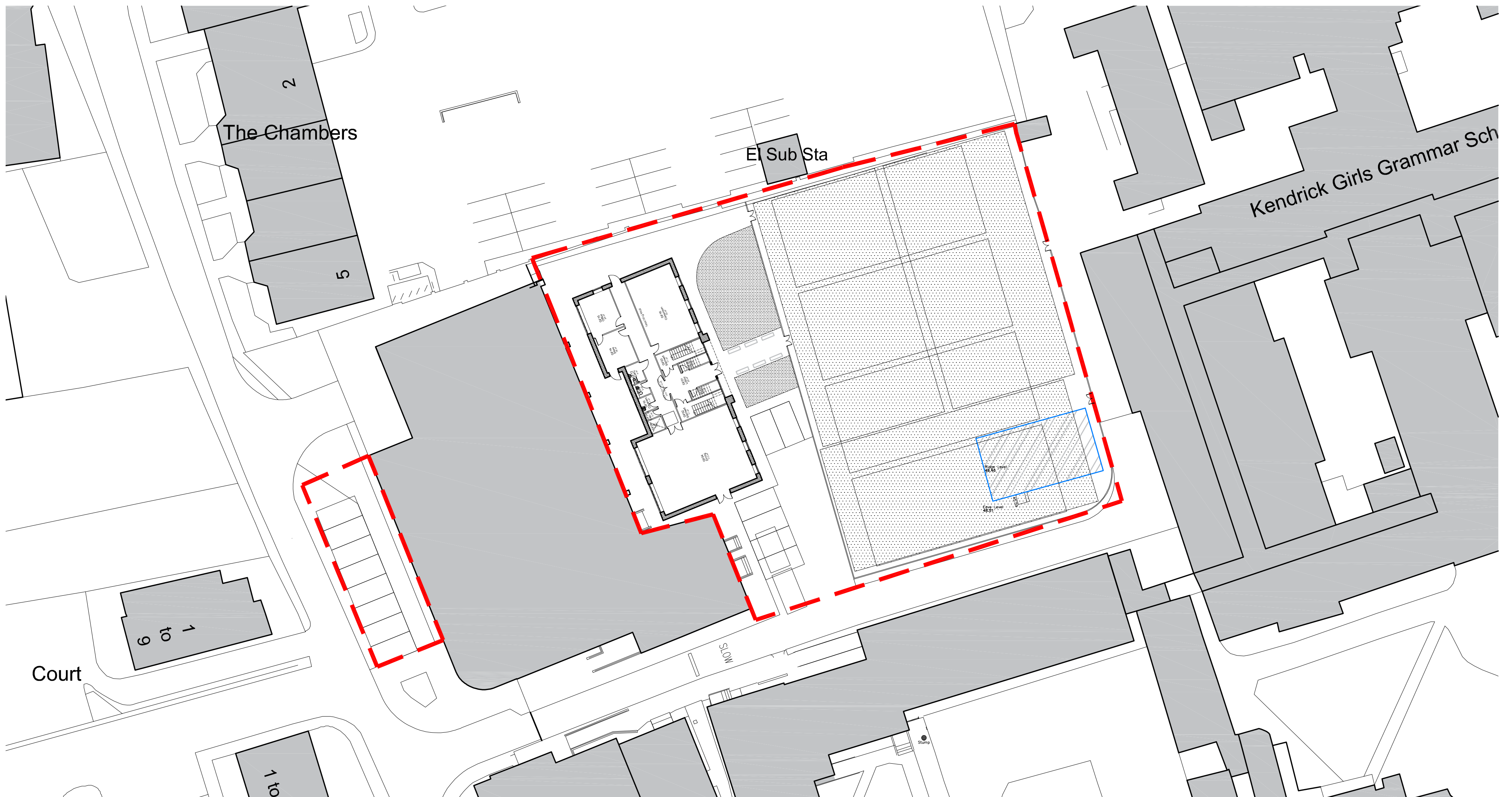
Our work ranges from restoration to new builds, and often requires a high degree of sensitivity to meet the needs of all those involved. Past projects include schools, hospitals, fire stations, churches and care homes. Our team of 160 people combines architects, building surveyors, quantity surveyors, electrical, mechanical and environmental engineers, project managers and health & safety specialists. Their shared expertise and our collaborative culture, combined with the latest technology, enable us to offer dynamic solutions and value for money.

For each project, we build a bespoke team around our client to deliver the exact knowledge and expertise they need.

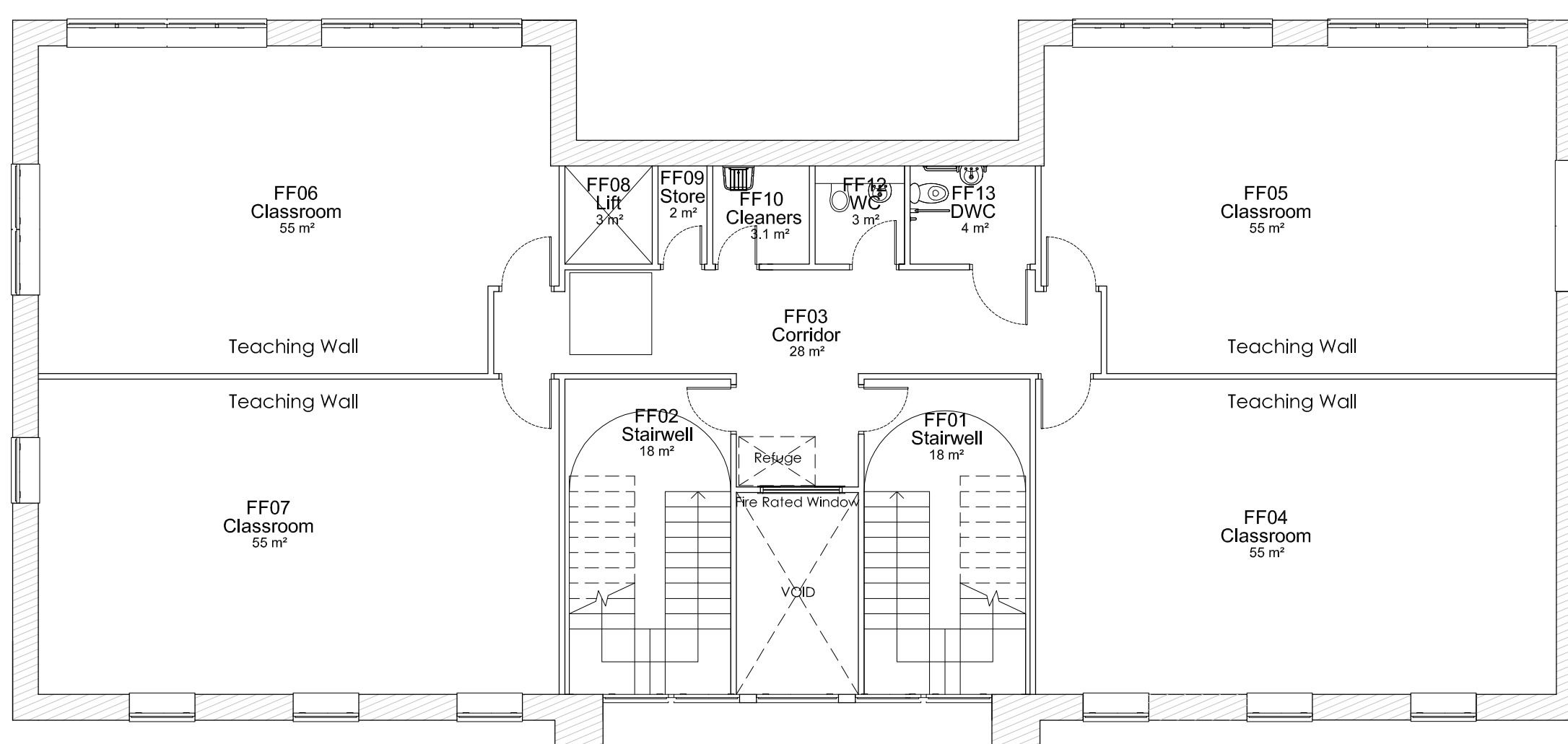


Proposed Plans

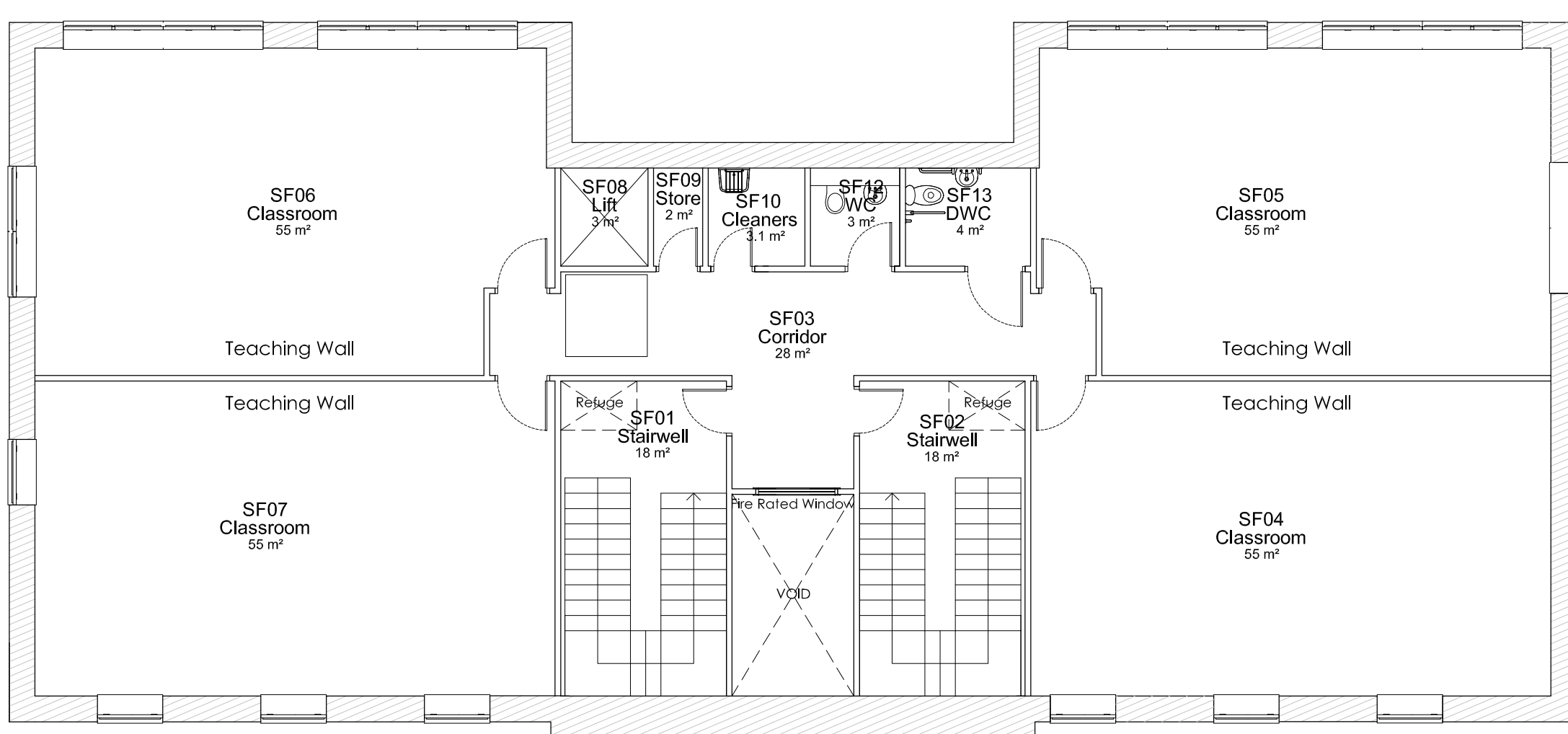
Proposed Ground Floor within context (Not to Scale)



Proposed First Floor Plan (Scale 1:100)



Proposed Second Floor Plan (Scale 1:100)



Proposed Works:

Kendrick school, with Baily Garner and the Darwin Group, have been successful in this funding round and will be able to unlock potential on the site to facilitate the expansion of the school by 1FE. After an analysis of the school, the classroom sizes and assessing the proposed expansion we have designed a new 3 storey standalone building which will provide:

- 9 classrooms
- Additional dining provision
- Additional toilets and offices

The building will be located alongside the existing sports and will facilitate the reconfiguration of the tennis and netball courts alongside the new building. A new parking layout and pedestrian routes have also been proposed to ensure safer routes for the students accessing the different areas of the school.





**BAILY
GARNER**

Kendrick School

May 2019

Proposed Site



ELEVATION A

