

# Kendrick School Expansion Proposal Plans



Consultation Meeting  
21<sup>st</sup> June 2018

# Kendrick School



- Mrs Jan Nowecki
- Ms Christine Kattirtzi
- Ms Mariola Viegas

**Chair of the Governing Body**

**Headteacher**

**Baily Garner, Architect**

*Lead, inspire, make a difference*

**Kendrick School**

# Introduction and Background



- Kendrick School is a successful school for girls
- Three form entry school
- Planning for growth and expansion
- Limitations of site

# Local Context



- Need for secondary school places in 2020
- Increase in student population in Reading
- Gender parity across grammar school provision
- Demand for places at Kendrick
- Reading LA plans to meet needs
- Listening to the local community and MPs

# Selective Schools Expansion Fund (SSEF)



- Government initiative to increase selective school places
- £50m total fund available for additional places
- Essential criteria
  - There is a need for additional places and parental demand
  - Addresses issues of social mobility and disadvantaged students
  - Strong educational track record
  - Strong leadership and governance

# Widening Horizons

## Social Mobility



“Raising aspirations, confidence and achievement for all”

- Complex issue –breaking down barriers
- Raising aspirations from early years
- No easy solutions – Kendrick will not solve this problem but it can be part of the solution

# Widening Horizons

## Pupil Premium



“The **pupil premium** is additional funding for publicly funded schools in England to raise the attainment of disadvantaged pupils of all abilities and to close the gaps between them and their peers”. DfE website

We **aim** to increase access to Kendrick School for students eligible for **pupil premium** by increasing the number of these students **sitting** the entrance tests, **being successful** in those tests and being **admitted** to Kendrick School.

# Widening Horizons

## Current Outreach



## Track record of Widening Horizons

- History and success of working with other schools
  - Specialist School
  - Federation with Reading Girls' School
  - Family outreach activities
  - Science Learning Partnership (SLP) and Maths hubs
  - Cross curricular activities for primary schools
  - CPD for staff

# Widening Horizons

## Future Outreach



### Future plans and activities

- New outreach programme to local schools
  - Inspirational workshops
  - Awareness raising activities
  - Buddy scheme
  - Summer school

# Widening Horizons

## Priority and Wider Admissions Arrangements



- **Ambitious and realistic**
  - Prioritising pupil premium students
  - Qualifying score
  - Admission arrangements - review of designated area
  - Targeted support to primary schools in the local area with high numbers of students on pupil premium

# Building Plans



- Accommodation for an additional 160 new students
- New classrooms and laboratory facilities
- A constrained site
- Health & Safety considerations
- Recreational space
- Plans based on curriculum needs and value for money
- Timescales

# Site Analysis



## Capacity and Site Analysis of School

- Review building condition
- Analysis of the school site
- Review of the classroom sizes against BB103
- Identifying the site for expansion

# Site Analysis



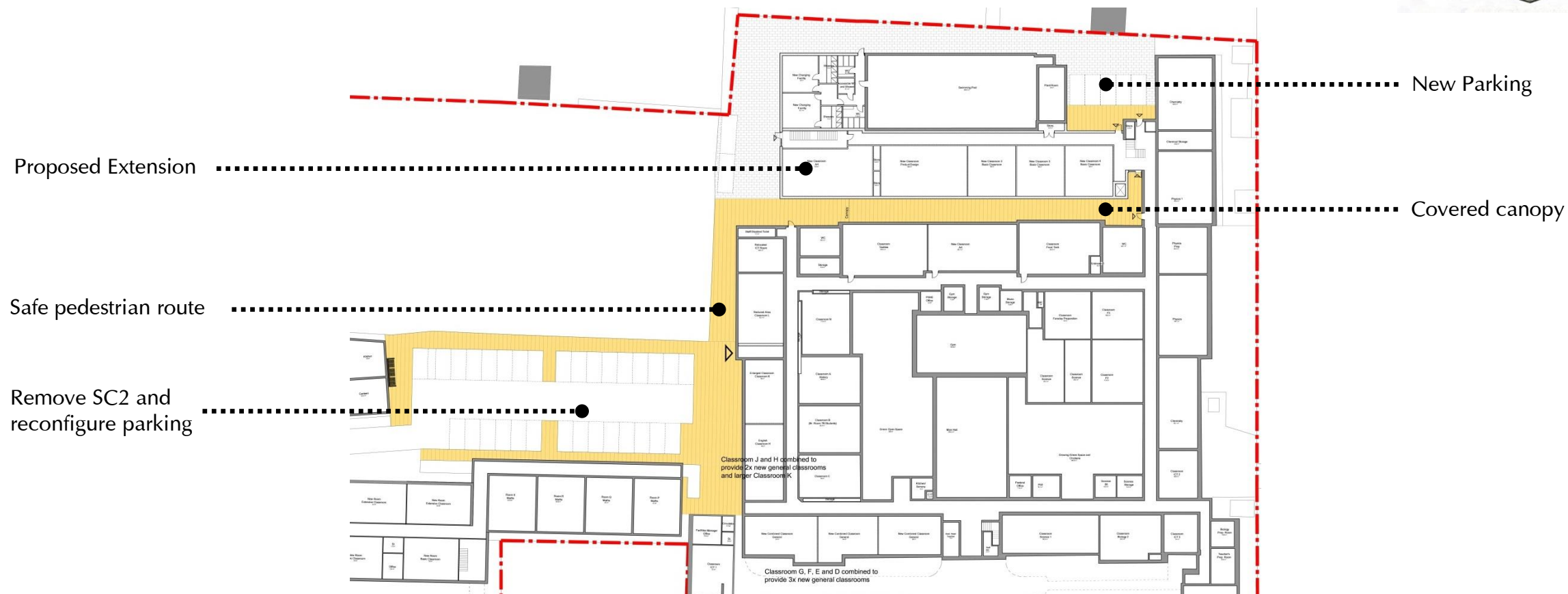
*Lead, inspire, make a difference*

**Kendrick School**

# Strategic Approach



- Safe links across the carpark
- Address congestion issues across the school
- Increase size of undersized classrooms



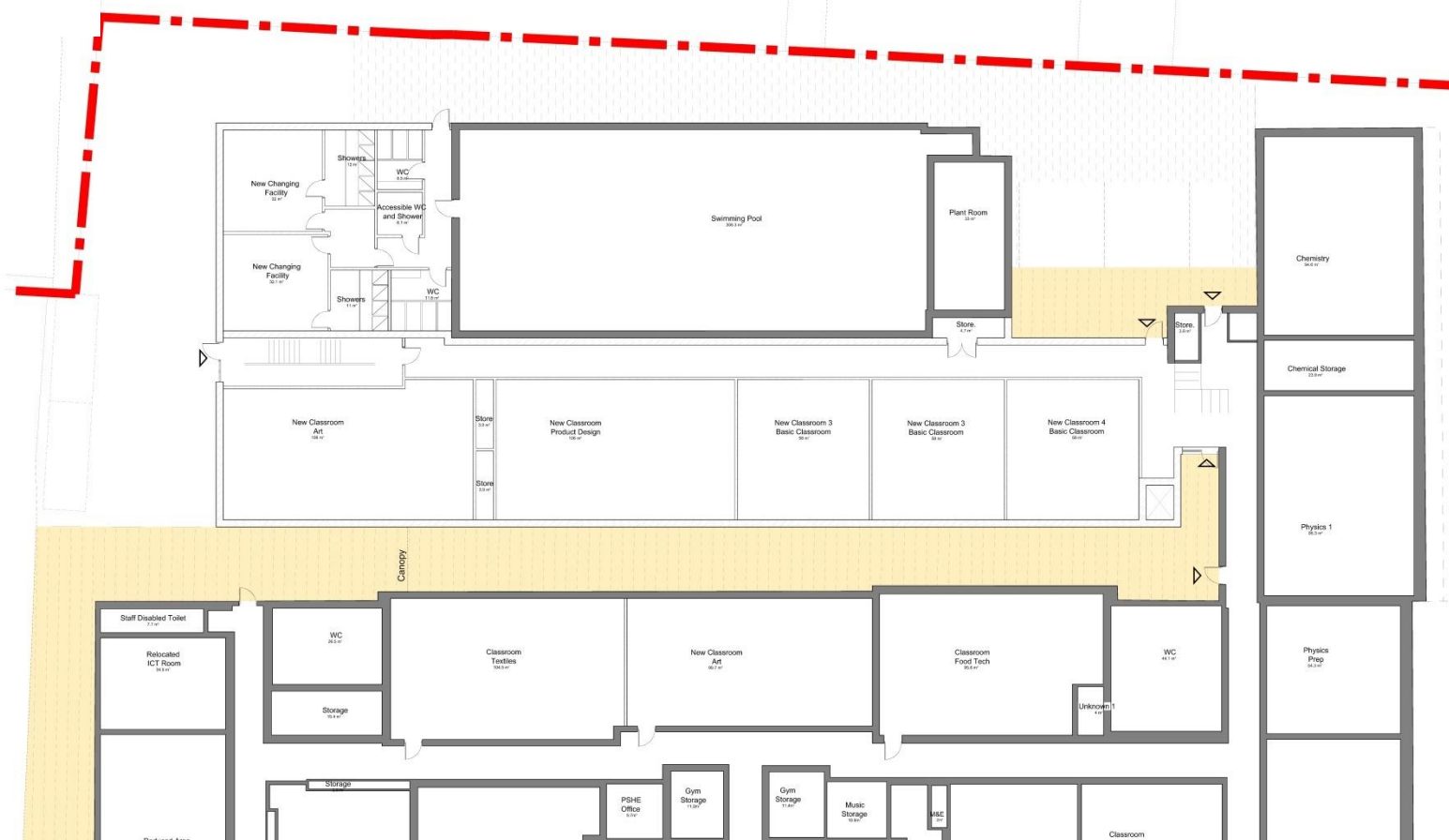
# Expansion Proposals



## Proposed Schedule of Accommodation for Extension

- 9 additional classrooms
- Re-provision of some subject areas
- Re-provision of changing rooms
- Additional Science Laboratories

# Proposed Ground Floor



# Proposed First Floor



# 3D Views



*Lead, inspire, make a difference*

**Kendrick School**

# 3D Views



*Lead, inspire, make a difference*

**Kendrick School**

# 3D Views



*Lead, inspire, make a difference*

**Kendrick School**

# Impact on Kendrick School



- **Students:** By 2024 there will be 640 students in Y7-11 plus Sixth Form of 280 students. **Total 920 students.**
- **Staff:** More staff needed for the additional lessons
- **Curriculum:** Securing curriculum choice
- **Site:** New buildings will provide better facilities for all
- **Health and Safety:** Reorganisation of site to make movement of students and staff safer
- **Proven track record:** Sixth Form expansion

# Timescales



- Consultation period 7<sup>th</sup> June-5<sup>th</sup> July 2018
- Public meeting 21<sup>st</sup> June 2018
- Deadline for application 19<sup>th</sup> July 2018
- Outcome of application Autumn term 2018
- Building work commences 2019/2020
- New form of entry September 2020



# Q&A

*Lead, inspire, make a difference*

**Kendrick School**



# Thank You